



## Rabbit anti CSF-1R (pY723) Polyclonal Antibody

Alternative Name(s): Colony stimulating factor 1 receptor; CD115

### Order Information

- **Description:** CSF-1R (pY723)
- **Catalogue:** 602-110
- **Lot:** See label
- **Size:** 100ug/200ul
- **Host:** Rabbit
- **Clone:** nan
- **Application:** IHC(P), WB
- **Reactivity:** Hu, Ms, Rt

### **ANTIGEN PREPARATION**

A synthetic peptide corresponding to the epitope –DTYVEM- at a phosphorylation site at tyrosine 723 of human CSF-1R protein. This sequence is identical within human, mouse, rat, and bovine.

### **BACKGROUND**

CD115, or Colony-stimulating factor-1 receptor (CSF-1R), is the major regulator of macrophage development and associated with epithelial cancers of the breast and ovary. CSF-1R is a disulfide-linked homodimer, which upon binding of its ligand, CSF-1, undergoes tyrosine autophosphorylation and subsequently, phosphorylates other membrane-proximal downstream targets which results in cytoskeletal remodeling, gene transcription and protein translation. The activated or phosphorylated form of CSF-1R has been associated with enhanced invasive and metastatic potential. The phosphorylation residues include Tyr 708, Tyr 723, Tyr 809 which correlate CSF-1R expression with changes in the growth and development of the cancer stage.

### **PURIFICATION**

The Rabbit IgG is purified by site-modified Epitope Affinity Purification.

### **FORMULATION**

This affinity purified antibody is supplied in sterile Tris-buffered saline (pH7.2) containing antibody stabilizer

### **SPECIFICITY**

This antibody recognizes human CSF-1R protein at a phosphorylation site of Tyrosine 723. It does not recognize non-phosphorylated peptides. This antibody also reacts with mouse. The other species are not tested.

### **STORAGE**

The antibodies are stable for 24 months from date of receipt when stored at –20oC to –70oC. The antibodies can be stored at 2oC-8oC for three month without detectable loss of activity. Avoid repeated freezing-thawing cycles.

### **APPLICATIONS/SUGGESTED WORKING DILUTIONS\***

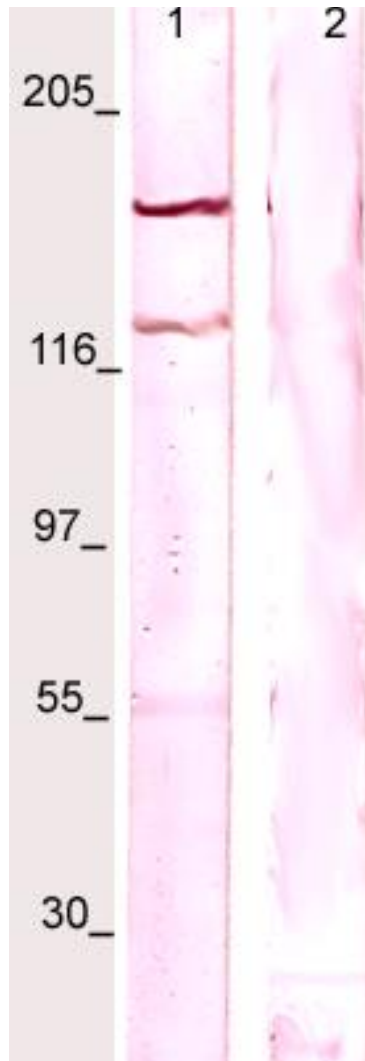
- Western Blot: 0.1-1 µg/ml
- ELISA: 0.01-0.1 µg/ml
- Immunoprecipitation: 2-5 µg/ml
- IHC: 2-10 µg/ml
- Flow cytometry: Not tested
- Molecular Weight: 109.0
- Positive Control: Kidney Tissue
- Cellular Location: Cell Membrane

\*Optimal dilutions should be determined by researchers for the specific applications.

### **FOR RESEARCH USE ONLY.**

AbboMax, Inc 2528 Qume Drive, Suite 8, San Jose, California 95131, USA  
1 408-573-1898 (Tel). 1 408-573-1858 (Fax). [www.abbomax.com](http://www.abbomax.com) [info@abbomax.com](mailto:info@abbomax.com)

**DATA ATTACHMENTS**



Western Blot: The whole cell lysate derived from m-CSF stimulated LNCaP was immunoblotted by Rabbit anti-CSF-1R (pY723) (Cat#602-110) at 1:500. A major immune-reactive band is observed around ~150kDa (lane 1). This band is blocked by pre-incubation of immunizing peptide (lane 2)

**REFERENCES**

**FOR RESEARCH USE ONLY.**